



STRUCTURE, FIXTURES AND FACADE	
Reinforced concrete structure complying with current regulations and operating against moisture. Double-glazed partition walls with air chambers. Thermal and acoustic insulation to enjoy the top comfort, energetic saving, independence and insulation. White monochrome ceramic floors with a thin floor with waterproof plastic paint and porcelain stoneware with a natural finish on the ground floor and a wood finish on the 1st floor.	
FLOORING AND PAINTING FINISHINGS	
High quality porcelain floor tiles throughout the property. Non-slip ceramic floor tiles of the patio and terraces. Smooth painting throughout the property with decorative tiling in living room.	
EXTERIOR AND INTERIOR WOODWORK	
Exterior windows in double PVC with sliding and tilt-and-turn system, wood finish on the outside and white on the inside. Double glazed windows with dual function: thermal and acoustic insulation. Main entrance automated door with security lock and panoramic spectacle. White lacquered internal woodwork. Effect wood in-line worksheds with lacquered, with drawers in the main bedroom.	
KITCHEN	
Kitchen equipped with built high and low a cupboard space laminate high gloss finish, glass a compact quartz worktop, stainless steel sink and DECORATIVE EXTRACTOR HOOD, installation of electric spots for the oven and stoveburner. Installation of electric spots for the washing machine and dryer in the patio.	
BATHROOM FACILITIES	
Production of hot water by Aerothermos 110 L. External door shower floor, Sanitary with integrated cabinet in all the bathrooms. Complete bathroom furniture with mirror, lighting and toilet in all the bathrooms. Laminate in Marine (water resistant) in Bathroom 2. Parking cabinet in all wet rooms.	
ELECTRICITY	
Pre-installed TV, telephone and internet spots in all the bedrooms and bathroom. INKIDOM. High quality electric installation according to your specific needs.	
SPECIAL INSTALLATIONS	
AUTOMATED BLINDS in the living room and bedrooms. Dual-air AIR-CONDITIONING pre-installation with false ceiling exits in all the rooms. Forced ventilation in bedrooms and kitchen.	
GARDEN AREA	
Enclosure of plot with wall and metal fence. Access to community pool.	
SOLARIUM	
Reinforced concrete with thermal and acoustic insulation. Finished with non-slip ceramic floor tiles and artificial turf. Retractable glass railing. Light and water spots. Pre-installation of vehicle dock.	
WARRANTY	
Each property will be handed over with its Building Book, an energy Performance Certificate (CPE) and a Home Warranty Insurance with full cover for a ceiling of 10 years against a damage caused by defects which affect either the foundations or other load-bearing elements.	

BUILDING SPECIFICATIONS

Alicante (Costa Blanca) - Torrevieja

New Build - Villas

Ref. SNS-1037

From 238.000€



3 BEDROOMS



3 BATHROOMS



89M²



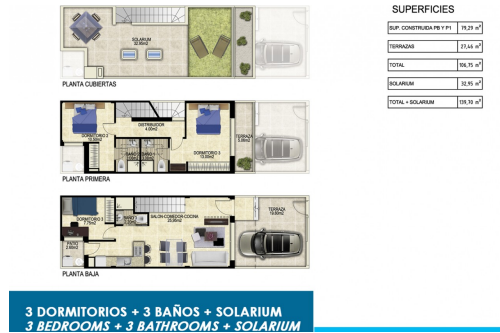
COMMUNITY



COMMUNITY



IN PROCESS



Superb 3 bedroom semi-detached townhouses are available within a short reach of Torrevieja and the beaches. The property will be finished to the highest standard and will also include a promotion for the launch. * PROPERTY LIGHTING SPOTS * SHOWER SCREENS IN BATHROOM * WHITE GOODS PACK * LARGE SOLARIUM WITH SEA AND LAGUNA VIEWS * MOTORIZED BLINDS IN LIVING ROOM & BEDROOM * PRE-INSTALLATION OF HOT & COLD DUCTED AIR CONDITIONING If you would like to receive further information please contact us at 79estates Spain.

key features

- Bedrooms: 3
- Built: 89m²
- Energy Rating: In process
- Garage: Community
- Distance to airport: 45Mins.
- Bathrooms: 3
- Toilets: 3
- Year of construction: 2022
- Distance to beach: 4Km.
- Distance to amenities: 5Mins.