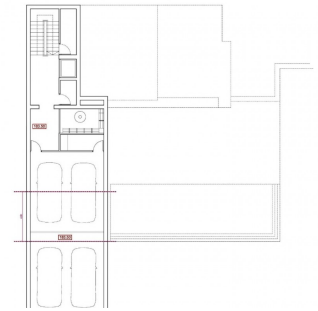


Segregação	Combustíveis
PLANTA BAIXA	
WINDMILL	127 810 kcal
POUR ME	35 380 kcal
VOLCANO	5 390 kcal
TERRAZA	
POUR ME	917 180 kcal
	32 030 kcal
PLANTA ALTA	
WINDMILL	97 420 kcal
VOLCANO	50 380 kcal
VOLCANO	4 980 kcal
TERRAZA	
PLANTA DIFUND-1	55 240 kcal
WINDMILL	107 350 kcal
VOLCANO	55 950 kcal
PLANTA DIFUND-2	
WINDMILL	52 480 kcal
GAP-RE	60 330 kcal
VOLCANO	4 550 kcal



Superficie	Comercio
PLANTA BAJA	
VIVIENDA	127.81
PORQUE	28.90
VOLADO	9.20
TERRAZA	
PISCINA	117.18
	52.20
PLANTA ALTA	
VIVIENDA	95.43
VOLADO	13.60
VOLADO	4.90
TERRAZA	
PLANTA SOFANO +1	
VIVIENDA	137.69
VOLADO	18.90
PLANTA SOFANO 2	
VIVIENDA	62.40
SALA	43.20
VOLADO	8.90



genotype	Concentration
ARISA-SEA	
WINTER	127.61±62
20°C-E	38.99±62
CLONADO	9.39±62
ARISA-2	
WINTER	117.19±62
CLONADO	52.55±62
ARISA-ALFA	
WINTER	91.43±62
CLONADO	10.09±62
CLONADO	4.95±62
ARISA-3	
WINTER	90.25±62
ARISA-BETA-1	
WINTER	137.55±62
CLONADO	18.55±62
ARISA-BETA-2	
WINTER	82.45±62
ARISA-4	
WINTER	45.39±62
CLONADO	4.55±62

Project for a luxury villa to be built in the Montemar area of the Benissa coast with sea views and views to Peñón de Ifach. This villa, with exposed paneled concrete finishes, has 4 floors that are connected with an elevator and an internal staircase. The ground floor has a large open living-dining-kitchen area and a toilet. The kitchen is fully equipped and it has a cooking island. Sliding doors at ceiling height give direct access to a spacious terrace and a pool. The upper floor has two bedrooms with en-suite bathrooms and a terrace. The property has 2 basements. The basement number 1 has another two bedrooms, each with its own bathroom and a laundry room. The basement number 2 includes the gym, the wine cellar and a garage with capacity for 4 cars. The house has air conditioning (with ducts) and central heating with heat pump. There is an automatic entra...

## key features

- Bedrooms: 4
- Bathrooms: 4
- Built: 548m<sup>2</sup>
- Plot: 964m<sup>2</sup>
- Energy Rating: In process