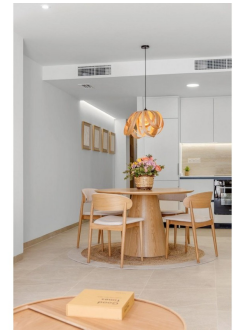




-
Ref.

Consult





key features

- Energy Rating: In process

Features

- Air Conditioning: Pre-Installed
- Communal Pool
- Elevator/Lift
- Location: Rural
- Near Schools
- Parking - Space
- Storage / Trastero
- Useable Build Space: 69 Msq.
- Beach: 20000 Meters
- Double Bedrooms: 3
- Gated
- Near bus route
- Number of Parking Spaces: 1
- Patio
- Terrace: 6 Msq.