



## ALICANTE - Torrevieja

Sale - Apartment

Ref. PF-13023

**169.000€**



3 BEDROOMS



1 BATHROOMS



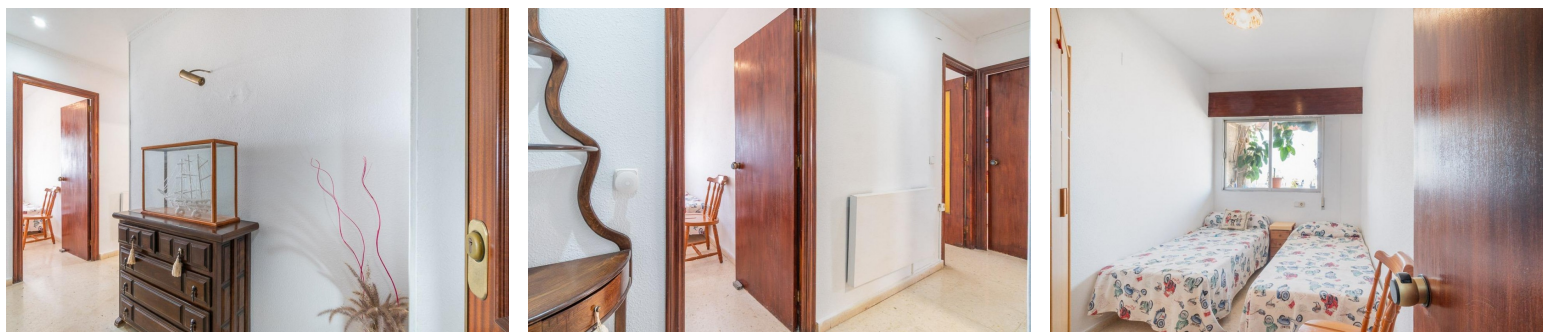
86M<sup>2</sup>



0M<sup>2</sup>



IN PROCESS



Apartment with sea views 200 metres from the beach in Curva del Palangre - Torrevieja. . Discover this fantastic apartment located in one of the most sought-after areas of Torrevieja, in the Curva del Palangre area, just 200 metres from the sea and very close to Los Locos Beach and the seafront promenade.. . The property has 86 m2 built area, is ready to move into, and is located on the sixth floor, offering plenty of natural light and pleasant Mediterranean views thanks to its East orientation.. . It features 3 spacious double bedrooms, perfect for a family, guests, or as a holiday home. It also has two balconies, ideal for enjoying the Costa Blanca climate and the sea views. The kitchen is independent, providing comfort and functionality for everyday living.. . The property is located in a closed and secure residential complex, in a quiet area surrounded by trees and pleasant spaces for walking and enjoying the surroundings. There is also the...

## key features

- Bedrooms: 3
- Built: 86m<sup>2</sup>

- Bathrooms: 1
- Energy Rating: In process

## Features

- Appliances
- Elevator
- Residencial
- Vistas al mar
- Water

- Balcon
- Light
- Telephone
- Wardrobes cupboard